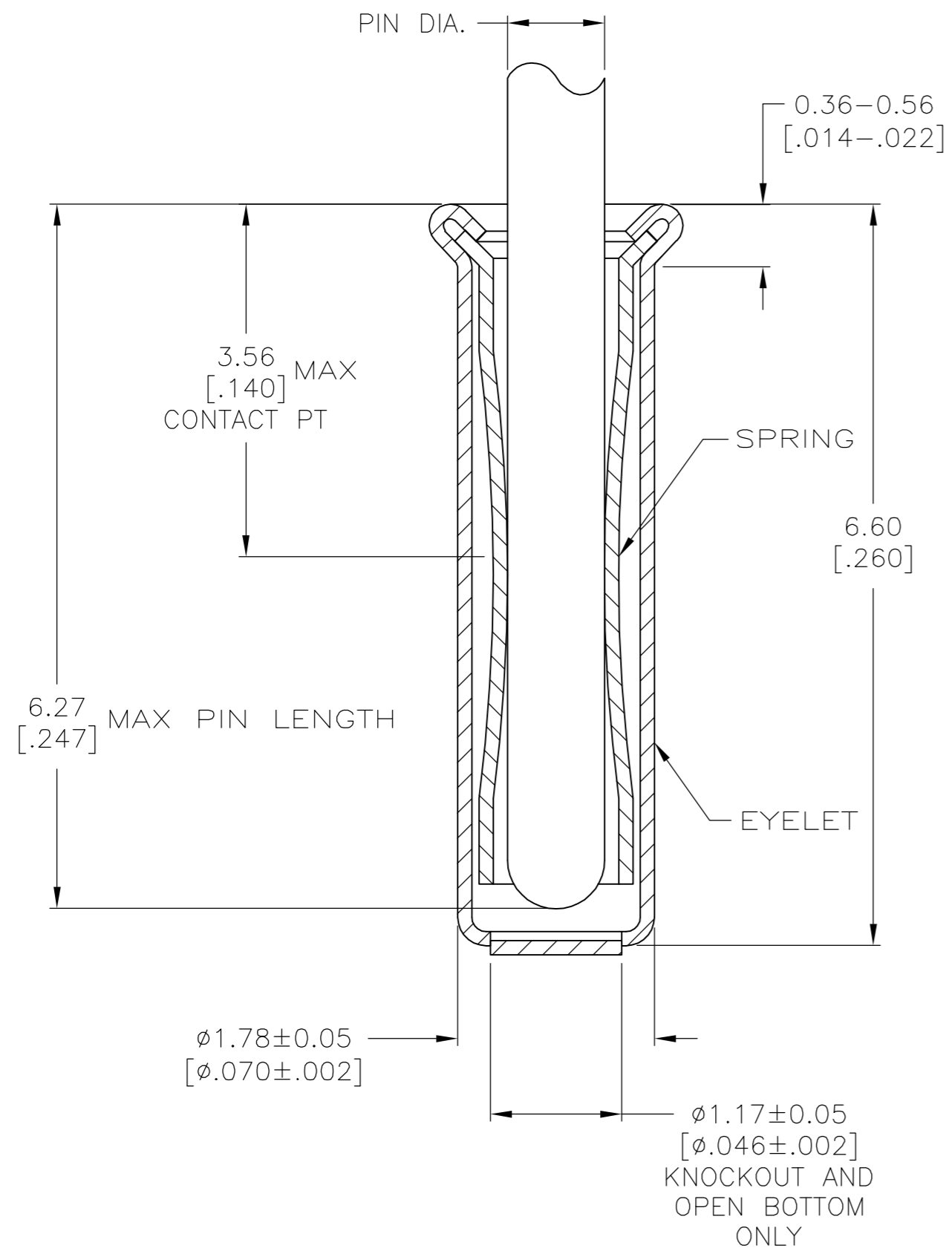
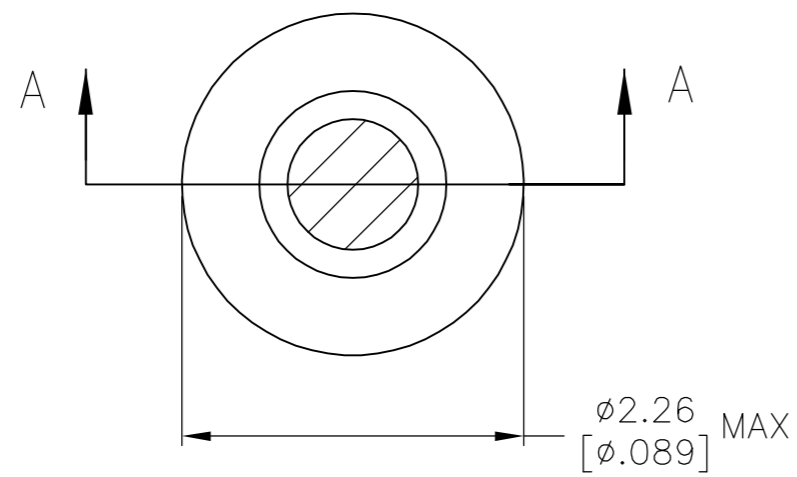


THIS DRAWING IS UNPUBLISHED. RELEASED FOR PUBLICATION
 © COPYRIGHT BY TYCO ELECTRONICS CORPORATION. ALL RIGHTS RESERVED.

LOC	DIST	REVISIONS					
GP	00	P	LTR	DESCRIPTION	DATE	DWN	APVD
		AF2		REV PER ECO-06-018765	13APR07	DH	DB



SECTION A-A

- ① TIN PER MIL-T-10727 OR TIN LEAD .000254 [.000100] MIN THK.
- ② GOLD PER MIL-G-45204, TYPE II, 0.00076 [.000030] MIN THK OVER NICKEL PER QQ-N-290 0.00028 [.000011] MIN THK ON CONTACT AREA.
- ③ GOLD FLASH PER MIL-G-45204, TYPE II, 0.13μm [.000005] MIN THK. OVER NICKEL PLATE PER QQ-N-290 0.51μm-1.52μm [.000020-.000060] EXT THK.
- ④ GOLD PER MIL-G-45204, TYPE II, 0.00127 [.000050] MIN THK.
- 5. RECOMMENDED HOLE SIZE, PLATED OR UNPLATED:
 MACHINE INSERTION: 1.83 ^{+0.10}/_{-0.08} [.072 ^{+0.004}/_{-0.003}]
 HAND INSERTION: 1.83 ^{+0.10}/_{-0.00} [.072 ^{+0.004}/_{-0.000}]
- 6. APPLICATION TOOL PART NUMBER:
 MACHINE NO. 682127-5
 INSERTION HEAD NO. 682039-4
- ⑦ TO INSURE PROPER SPRING TENSION DO NOT EXCEED A 0.05 [.002] DIFFERENCE IN PIN DIA WHEN CHANGING TO A SMALLER PIN.
- 8. BOTTOM PLUG KNOCKOUT TOOL PART NUMBER 69729 WITH TIP PART NUMBER 69728-2.
- ⑨ TIN PER ASTM B 545, .000254 [.000100] MIN THK.
- ⑩ MATERIAL: SPRING: BERYLLIUM COPPER QQ-C-533
 EYELET: COPPER, QQ-C-576

	KNOCKOUT		TIN ⑨	TIN ⑨	6-50865-7
	OPEN		GOLD ④	GOLD ②	6-50865-6
					1-50865-1
					1-50865-0
			TIN ①	TIN ①	50865-8
					50865-7
					50865-6
		0.86-1.04 [.034-.041]			50865-5
			GOLD ③	GOLD ②	50865-4
			TIN ①		50865-3
			GOLD ③		50865-2
			TIN ①		50865-1
			GOLD ③		50865
	BOTTOM TYPE	RECOMMENDED PIN DIA ⑦	EYELET	SPRING	PART NO
			FINISH		

THIS DRAWING IS A CONTROLLED DOCUMENT. DWN R. TALLEY 4-5-91
 CHK -
 APVD -
 PRODUCT SPEC -
 APPLICATION SPEC -
 WEIGHT -
 CUSTOMER DRAWING

tyco Electronics Tyco Electronics Corporation
 Harrisburg, Pa 17105-3608

NAME: MINIATURE SPRING SOCKET ASSEMBLY
 SERIES 4

SIZE: A2 CAGE CODE: 00779 DRAWING NO: C=50865 RESTRICTED TO: -
 SCALE: 1:1 SHEET: 1 OF 1 REV: AF2